



PROGRESSIVE
SURGICAL SOLUTIONS
A DIVISION OF VMG HEALTH

ASC NURSE LEADERSHIP CONFERENCE

APRIL 25-26

2024

DALLAS, TX



THE *ONLY* EVENT FOCUSED ON YOUR DEVELOPMENT AS AN **ASC NURSE LEADER**

Registration

	REGISTER BY 12/31/23	REGISTER AFTER 12/31/23
eSUPPORT MEMBER RATE	\$800	\$900
FULL PRICE (NON-MEMBER)	\$850	\$950

- Full program access to two-day conference, swag bag and gift
- 10 CE Contact Hours for RNs, 10 AEU Credits and 1.25 IPCH Credit *
- Breakfast and lunch Thursday and Friday
- Vendor Networking reception Thursday, with appetizers, beverages, & prizes

*This program is approved by the California Board of Registered Nurses, Provider Number 17841 for 10.5 CE Contact Hours. This program is pending approval for 10.5 hours of AEU credit and 1.5 hour of IPCH credit by BASC Provider #1016. Certificates of completion will be provided for all eligible attendees.

Venue & Hotel Accommodations

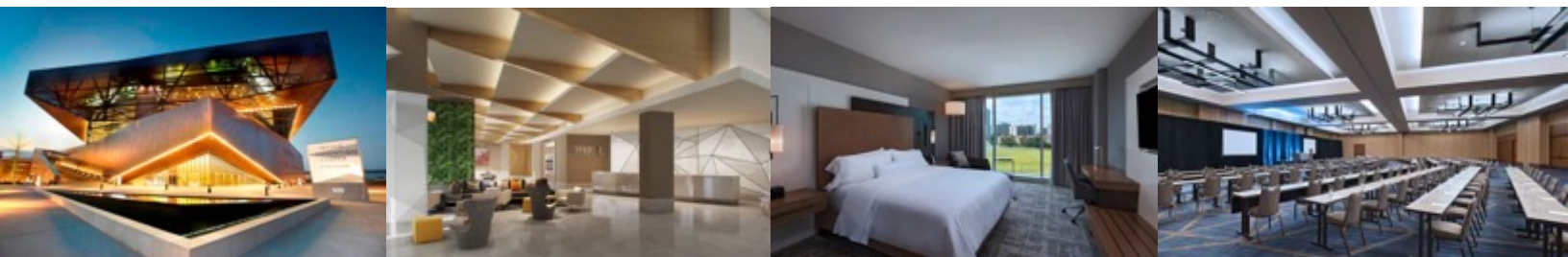
Westin Irving Convention Center at Las Colinas

400 West Las Colinas Boulevard | Irving, Texas | 75039
(972) 505-2900

\$239/night

Limited availability.
Must book by 3/27/2024

For the group rate, book with the link provided on the conference website.

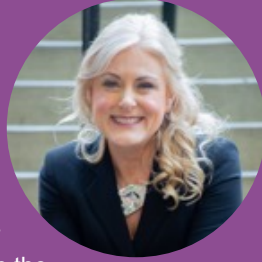


FOR MORE DETAILS AND TO REGISTER, VISIT: [ASCNURSELEADERSHIP.COM](https://ascnurseleadership.com)

Thursday April 25th

KEYNOTE | BEING A MORE EFFECTIVE LEADER FOR A HAPPIER HEALTHCARE WORKPLACE

Join us for an inspiring and informative keynote designed for nurses seeking to enhance their leadership skills and create a happier, more productive healthcare environment. In an ever-evolving healthcare landscape, effective leadership is crucial for ensuring both patient well-being and staff satisfaction. This program equips nurses with the knowledge, strategies, and tools needed to become more effective leaders, fostering a culture of positivity and fulfillment within their healthcare teams.



Understand the 6 stages of a challenge, change, or choice, and propel yourself and your team forward using Mary's unique leadership assessment, the 12-Month Success Planner, and the 5-minute solutions that make your life easier.

Mary Kelly PhD, CSP, CPAE, CDR, USN

CONFLICT RESOLUTION SKILLS EVERY LEADER NEEDS



Are you struggling with conflict management?

You are not alone. Conflict is a normal part of the workplace, but conflict resolution does not come naturally for most people. Research shows that conflict resolution is one of the most common development needs

of leaders and managers. We will deep dive into understanding dynamics of conflict, learn conflict resolution skills, and understand why embracing conflict is a tool for increasing individual resilience.

Amanda Penrod PhD, CASC

HOW TO WIN THE STAFFING BATTLE



The challenge to adequately staff your ASC has reached crisis level. While we cannot solve the nurse shortage in 1 hour, we will focus on what you can do to optimize your staffing strategy, including successful

interviewing principles, staffing alternatives, and nurse extenders. Most importantly and crucial for these times, we will discuss best practices for orientation and onboarding for optimal retention.

Debra Stinchcomb MBA, BSN, RN, CASC

Vanessa Sindell MSN, BSN, RN, CAIP

SHOW ME THE MONEY!



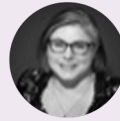
Effective nurse leaders understand this: the ASC is a business and profitability is essential. To run a business, you must monitor, analyze and report on the financial growth regularly. This session will explore how

to interpret ASC financial statements and Key Performance Indicators (KPIs) to monitor financial performance. Learn how to apply the KPI data to create your own bonus incentive plan.

Regina Boore MS, BSN, RN, CASC

Nancy Stephens

MANAGING UP: GETTING THE MOST FROM YOUR RELATIONSHIPS WITH OWNERS, OPERATORS, AND BOARDS



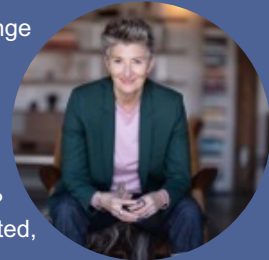
A positive relationship with your leaders will improve your work life and effectiveness. How you interact with your leadership differs from how you work with your team members. To be successful, you need to learn how to manage up effectively. In this workshop, we will distinguish between managing up and managing down and discuss the essential skills of managing up. These include communication and work styles, aligning priorities, modeling feedback, and timing.

Heather Lambert

Friday April 26th

KEYNOTE | THE SELF-CARE MINDSET® UNLOCKING AN AGILE CULTURE OF CARE® FROM THE INSIDE OUT.

The demands on us are increasing, and change is stressful, but how can we navigate daily challenges with intent and care instead of just continuing to push through and work harder? Instead of allowing uncertainty to freeze us up or burn us out, how can we grow through adversity and harness change? And how do we do our best when time is limited, and we're exhausted?



The world has changed, work has changed, and we have changed, but our relationship with self-care—the very foundation of performance—has remained the same. Not only that, what if we have self-care all wrong? What if self-care is not what we do after work to recover but rather a mindset we have with us all day long? What if self-care is how we support ourselves in spending time better?

The self-care mindset intersects emotional intelligence, mental agility, and our humanity to guide us. It's the foundation for positive change and growth. It's how we harness well-being and reclaim work-life quality so we can reach our goals without burning out. The power of this kind of care is at the core of high-performing teams and a culture where people belong, engage, connect, and work better together. In an inspiring keynote, certified mindfulness coach, workplace performance, and culture strategist Jeanette Bronée shares easy-to-use tools and strategies that can immediately be applied to unlock and harness the most essential resource we possess: our humanity.

Jeanette Bronée

WALKING AND TALKING THE QAPI WAY



With such a diverse role and seemingly endless list of responsibilities as an ASC nurse leader, you often have limited time to focus on Quality Assessment and

Performance Improvement (QAPI) and Infection Control (IC) activities. In this session, you will learn how to alleviate the burden by incorporating QAPI and IC into your daily routine.

Crissy Benze MSN, BSN, RN

April McElheny MBA, MSN, RN, CASC, CIC

Day 1

7:00AM	BREAKFAST
7:50AM	CONFERENCE KICK OFF
8:00AM	KEYNOTE SESSION <i>Mary Kelly</i>
9:30AM	BREAK
9:45AM	SESSION <i>Amanda Penrod</i>
10:45AM	ROUND TABLE / BREAK
11:15AM	SESSION <i>Debra Stinchcomb, Vanessa Sindell</i>
12:15AM	LUNCH
1:30PM	SESSION <i>Regina Boore, Nancy Stephens</i>
2:30PM	ROUND TABLE / BREAK
3:00PM	SESSION <i>Heather Lambert</i>
4:30PM	RECEPTION

Day 2

7:00AM	BREAKFAST
8:00AM	KEYNOTE SESSION <i>Jeanette Broné</i>
9:45AM	ROUND TABLE / BREAK
10:30AM	SESSION <i>TBA</i>
11:30AM	MINI-SESSION <i>State Associations & You</i>
12:00PM	LUNCH
1:15PM	SESSION <i>Crissy Benze, April McElheny</i>
2:30PM	ROUND TABLE / CONCLUSION
3:15PM	CLOSE



Our best program yet, with 2 powerhouse keynote speakers and 9 total dynamic sessions, we guarantee the highest quality of education, practical advice, and motivation specific to your unique role as an ASC nurse leader.



You asked for more time to breathe and connect with other attendees...we built it into the schedule. You'll find longer breaks and more of them, with the option to participate in themed and facilitated round tables discussions.



The NLC is not possible without the support of our generous sponsors. Thursday's reception is your chance to network and find out how their products and services can make your job easier. Relax after a long day of sessions with an open bar, appetizers, conversation with peers and faculty, and prizes. Stay tuned for more details and maybe some surprises!

OUR VALUED SPONSORS...

coming soon!



PROGRESSIVE
SURGICAL SOLUTIONS
A DIVISION OF  VMG HEALTH

Space is limited.

FOR MORE DETAILS
AND TO REGISTER, VISIT:

ASCNURSELEADERSHIP.COM

